

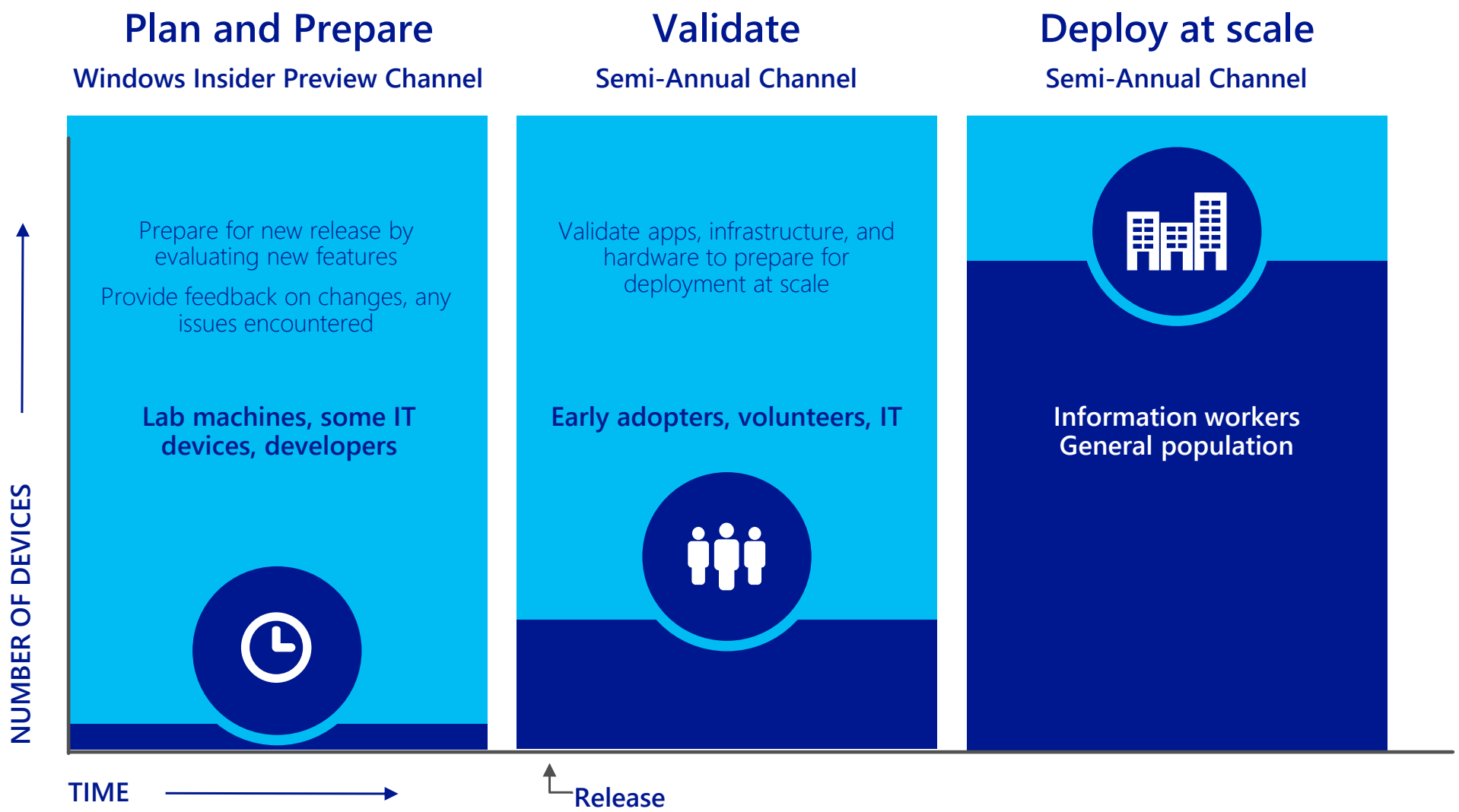
Deploy Windows 10 in an enterprise: Windows servicing

What IT professionals need to know to successfully update Windows 10 in their enterprise environments.

This topic is 6 of 6 in a series



Keep Windows up to date with the latest productivity and security capabilities, with a predictable semi-annual feature update cycle, and monthly cumulative updates containing security and functionality fixes.



Servicing tools available to update Windows 10

Multiple servicing tools to implement Windows as a service. Each option offers similar base capabilities with ranging control options, to offer simplicity and low administrative requirements when appropriate, and enhanced controls when they are required.

Windows Update

- Limited control over updates
- Requires IT Pros to manually configure devices
- Lowest administrative requirements
- Very hard to control in large environments

Windows Update for Business

- Enhanced controls over Windows Update
- Offers the option to defer and pause update rollout
- Controls available through Group Policy, MDM, and through User Interface in the Settings app
- No infrastructure requirements

Windows Server Update Services

- Extensive controls over update delivery, including the ability to time update delivery
- Option to easily create device deployment groups
- Option to create an approval layer
- Requires a minimum of one server to function

System Center Config Manager

- Greatest control over update delivery
- Biggest administrative requirements
- Can be used to deploy and configure devices
- Contains options of all other tools available

For more information on this topic, visit aka.ms/WaaS